

# Keyword Software Tool

By Software Bychoice  
2006 Beta Version 1.x.x

## TABLE OF CONTENTS

|   |  |   |
|---|--|---|
| 1 | Functionality.....   | 2 |
| 2 | Background for Use on Windows and File Structured Intranet ..... | 2 |
| 3 | Edit Features .....  | 3 |

## LIST OF FIGURES

|          |                                      |   |
|----------|--------------------------------------|---|
| FIGURE 1 | SCREENSHOT OF KEYWORD SOFTWARE ..... | 3 |
|----------|--------------------------------------|---|

## LIST OF APPENDIX

|            |                                      |   |
|------------|--------------------------------------|---|
| APPENDIX A | TYPICAL SINGLE REPORT LOG FILE ..... | 4 |
| APPENDIX B | EXCLUDE DICTIONARY OF WORDS .....    | 5 |
| APPENDIX C | SETTINGS.INI FILE EXAMPLE .....      | 6 |

## 1 Functionality

The Keyword Software Tool is intended for web masters to maintain keywords and Meta statements in web pages. The log file created will also support a web site search index which will support weighted searches. The current Beta version of the software is under development. Check back for updates on the web site or from within the menu: **Help -->Check for Updates**.

The following functions are supported in this version:

- File process list may be screened by file extension (.htm, .xml, etc)
- Creates a list of files with the matching extension(s).
- Allows use of an File list instead of one generated.
- Processes a single file or entire file list for Meta statements and keywords.
- Screens out disallowed (excluded words are editable) as keywords.
- Creates a log file containing:
  - Date log file was run
  - File names for all files processed
  - Meta statements for all files processed
  - Keywords for all files processed

## 2 Background for Use on Windows and File Structured Intranet

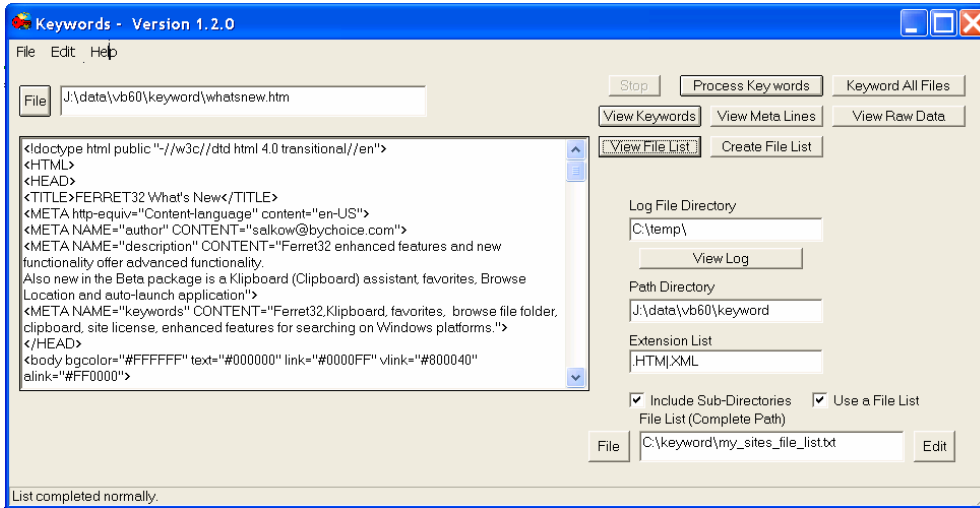
The program was initially design to manage file structured intranet data. Its ability to traverse the sub-directories from a root file makes the tool ideal at creating a search criteria file as well as handling sites that are not flat. Additionally, the tool can use a list of files so as to exclude certain ones.

Maintenance of a web site and its search is a big job that is ideal for automation software.

### 3 Edit Features

- Edit Settings.ini
- Edit exclude dictionary file
- Edit File List

Figure 1 Screenshot of Keyword software



# Appendix A Typical Single Report Log File

KEYWORDS from HTM file Log Report

Date: 08/18/2006

FILENAME=whatsnew.htm

```
<!doctype html public "-//w3c//dtd html 4.0 transitional//en">
```

```
<HTML><HEAD>
```

```
<TITLE>FERRET32 What's New </TITLE>
```

```
<META http-equiv="Content-language" content="en-US">
```

```
<META NAME="author" CONTENT="salkow@bychoice.com">
```

```
<META NAME="description" CONTENT="Ferret32 enhanced features and new functionality offer advanced functionality. Also new in the Beta package is a Klipboard (Clipboard) assistant, favorites, Browse Location and auto-launch application">
```

```
<META NAME="keywords" CONTENT="Ferret32, Klipboard, favorites, browse file folder, clipboard, site license, enhanced features for searching on Windows platforms.">
```

```
<META NAME="keywords" CONTENT="ferret32, whats, new, products, how, to, find, practically, everything, more, ">
```

```
<META NAME="keywords" CONTENT="about, searching, how to, register, ferret32 ferret32, examples, freeware, utilities, whats new, applications, ">
```

```
<META NAME="keywords" CONTENT="ferret32 -, easier, more powerful, whats new in, 4.26.x, now, remember, only, one, password, ">
```

```
<META NAME="keywords" CONTENT="finally, a, ultra, safe, repository, - password, file, is 128, bit, encrypted, data, ">
```

```
<META NAME="keywords" CONTENT="mining, on idle, system, time, bookmarks, favorites, consolidated, via, data mining, built, ">
```

```
<META NAME="keywords" CONTENT="in browser, more features, includes, configurable, search tool, search history, search again, remembers, file searched, command, ">
```

```
<META NAME="keywords" CONTENT="line, syntax, changed, to support, execute, immediate, and search, argument, space, button, ">
```

```
<META NAME="keywords" CONTENT="toggles, between, text, with, space replaced by underscore, and the, original, text ferret32, help, file updated, ">
```

```
<META NAME="keywords" CONTENT="with newest, features and, appearance, minor, button icon, enhancements, to add, clarity, encryption, allows, ">
```

```
<META NAME="keywords" CONTENT="you, to send, a safe, message, via email, to anyone, with ferret32, acsii, chart, reference, ">
```

```
<META NAME="keywords" CONTENT="added, to klipboard, anagram, scrambler, makes, all text, variations, a phrase, from, right, ">
```

```
<META NAME="keywords" CONTENT="click, menu, while, in search, results, window, top, site, licenses, are now, ">
```

```
<META NAME="keywords" CONTENT="available, contact, us, software, bychoice, 7478, alder, court, pleasanton, california, ">
```

```
<META NAME="keywords" CONTENT="94588, ">
```

## **Appendix B Exclude Dictionary of Words**

This is the suggested list that currently is included with the tool. (Check the real file for the latest version.)

|         |         |
|---------|---------|
| a       | now     |
| above   | of      |
| again   | our     |
| also    | over    |
| an      | someone |
| and     | the     |
| anyone  | there   |
| as      | to      |
| below   | under   |
| between | was     |
| by      | whats   |
| can     | while   |
| has     | will    |
| have    | with    |
| from    | to      |
| in      | us      |
| is      | you     |
| it      | your    |
| its     |         |

## Appendix C Settings.ini File Example

```
!REM Use like LOGFILE PATH = C:\temp\  
LOGFILE PATH = C:\temp\  
  
!REM Use like SOURCE DIRECTORY= J:\data\vb60\keyword  
SOURCE DIRECTORY= J:\data\vb60\keyword  
  
!REM EXTENSION = .HTM  
EXTENSION = .HTM  
EXTENSION = .XML  
  
!REM FILE LIST PATH = C:\keyword\my_sites_file_list.txt  
FILE LIST PATH = C:\keyword\my_sites_file_list.txt  
  
!REM Use TRAVERSE DIRECTORIES = TRUE to turn this feature on  
TRAVERSE DIRECTORIES = TRUE  
  
!REM Use TEXT EDITOR = complete path  
TEXT EDITOR = C:\Program Files\IDM Computer Solutions\UltraEdit-32\uedit32.exe
```